

DO NOT THROW THIS SHEET AWAY. USE FOR FUTURE REFERENCE. READ ALL INSTRUCTIONS CAREFULLY.

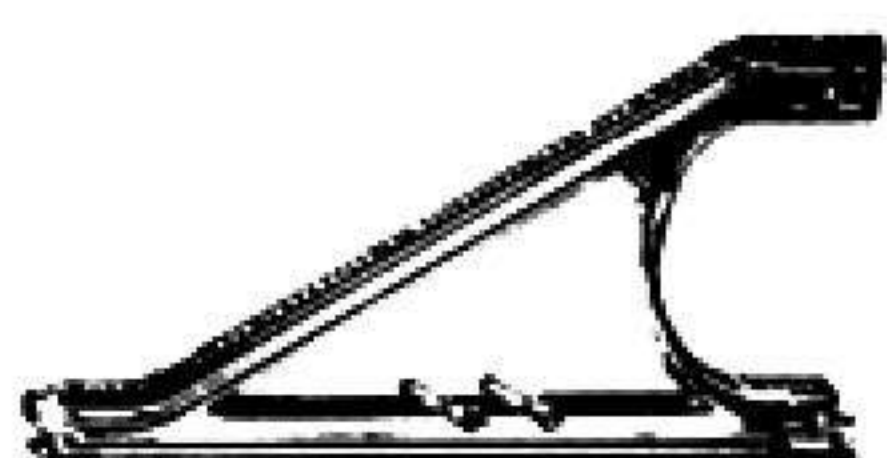
2 "AA" BATTERIES REQUIRED (NOT INCLUDED). FOR LONGER LIFE, USE ALKALINE BATTERIES.

CONTENTS:

1 DING-A-LING



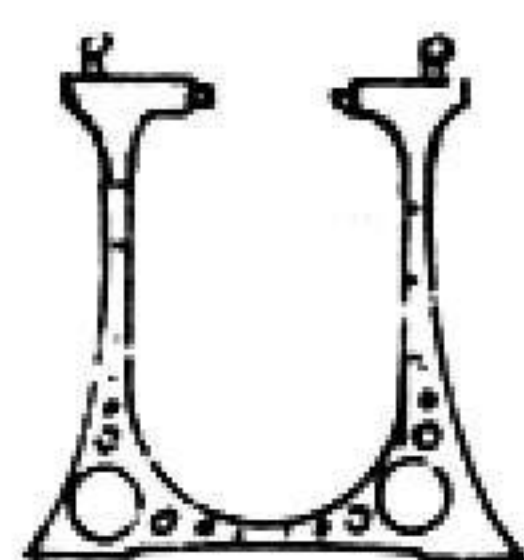
1 POWER PACK



6 STARTERS



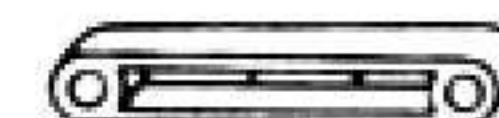
3 SPACE SKYWAYS



2 UPRIGHTS

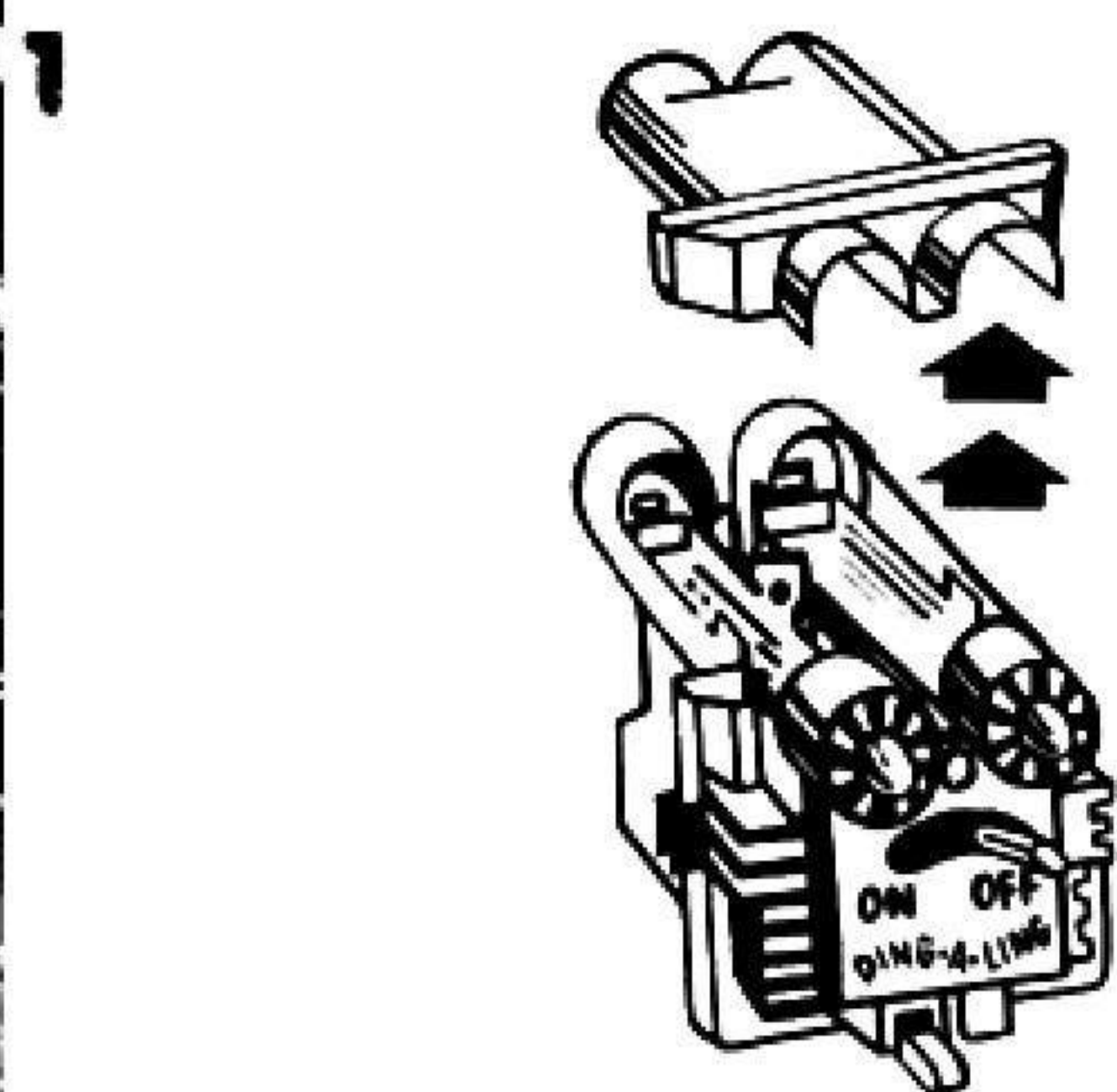


4 BASE CONNECTORS

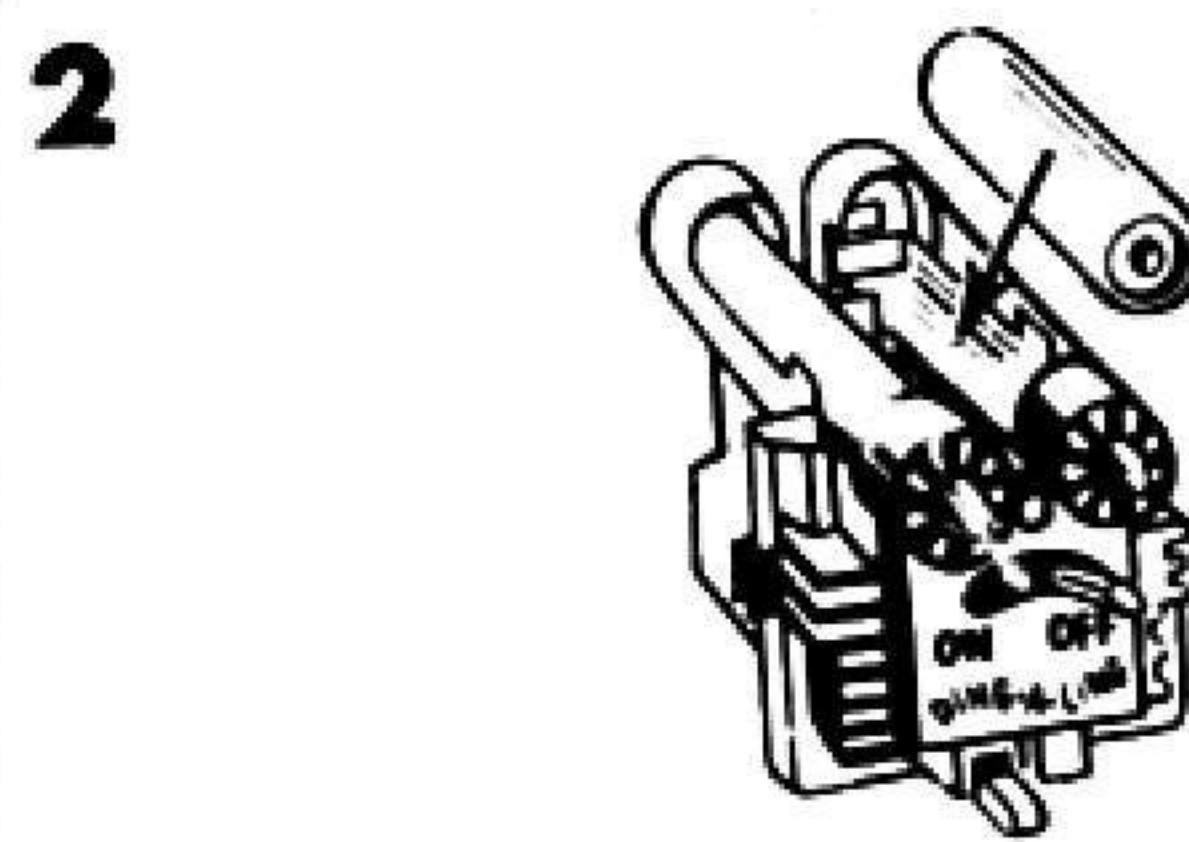


24 CONNECTORS

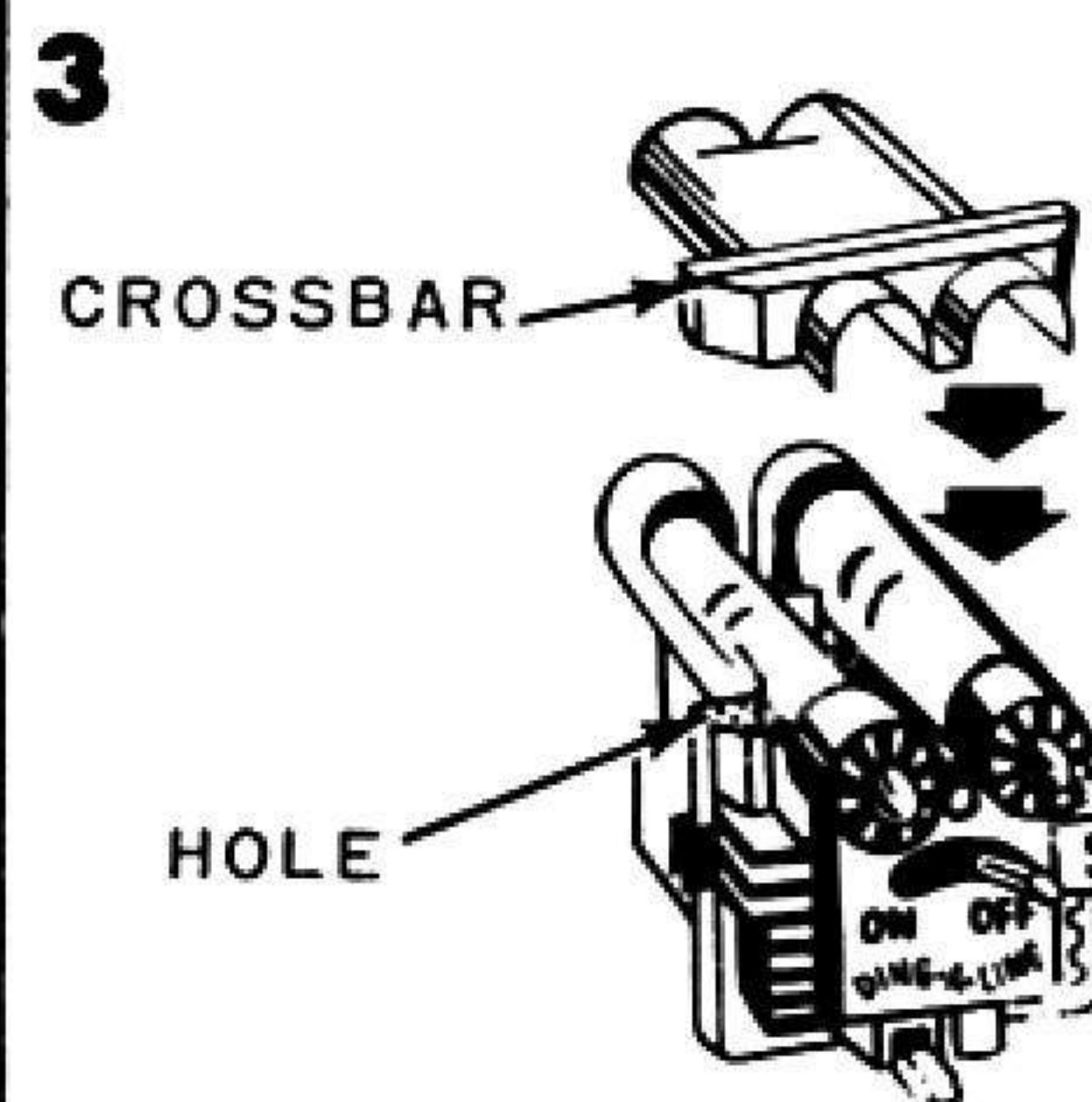
HOW TO ASSEMBLE POWER PACK



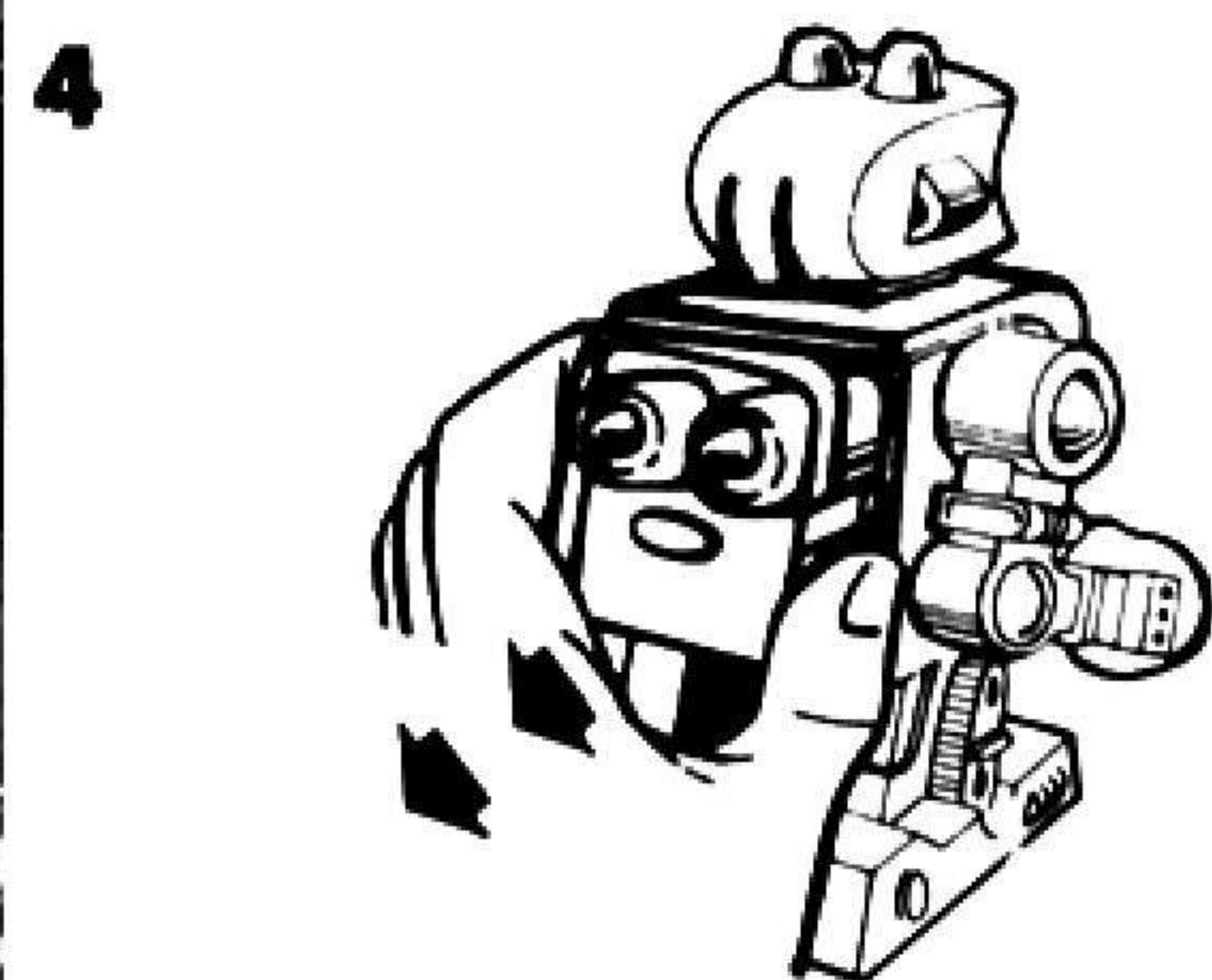
BE SURE SWITCH ON POWER PACK IS IN THE "OFF" POSITION. LIFT OFF BATTERY COVER, AS SHOWN.



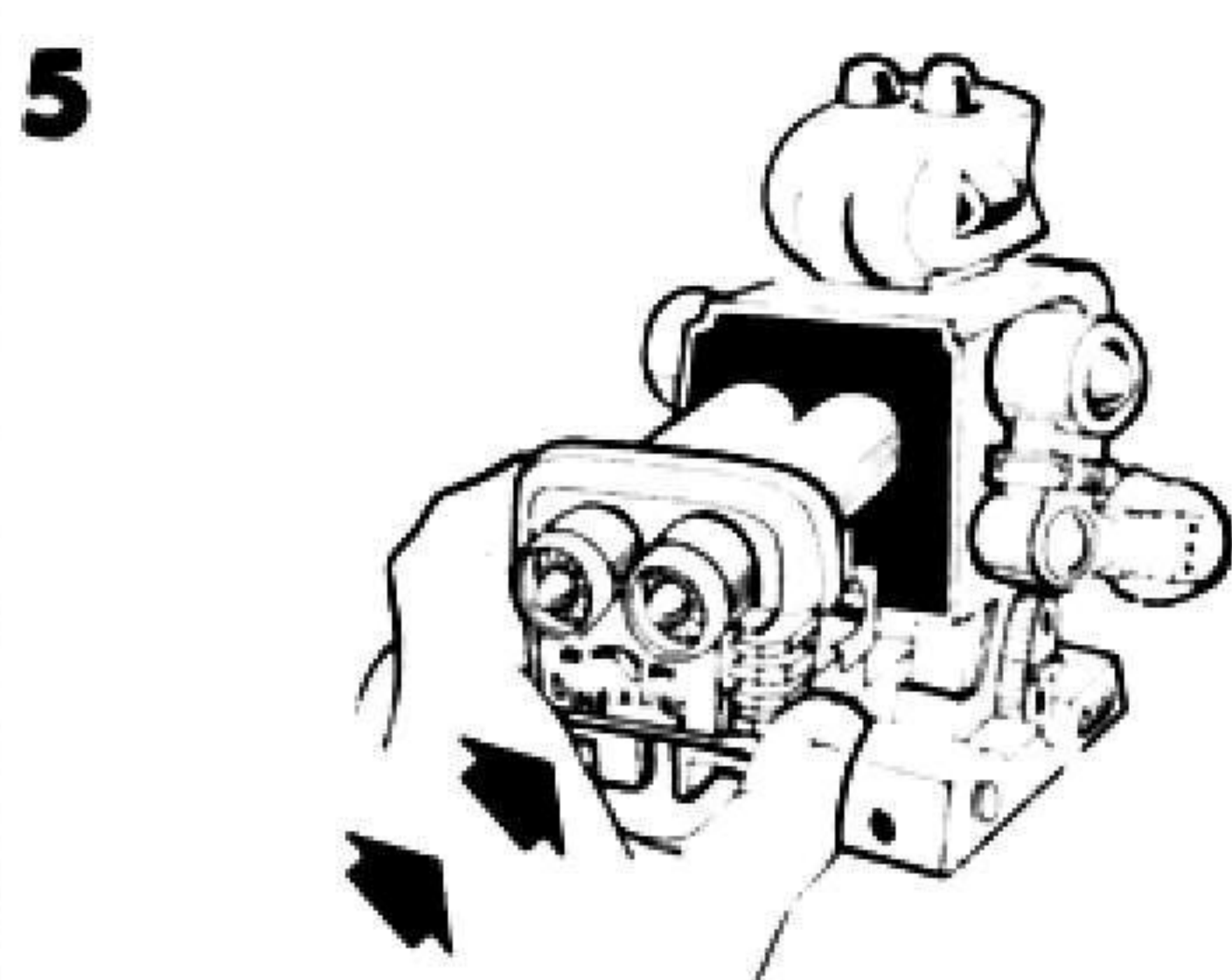
INSERT 2 "AA" BATTERIES (NOT INCLUDED), FOLLOWING DIAGRAM INSIDE BATTERY HOLDER. **IMPORTANT:** POWER PACK WILL NOT OPERATE UNLESS BATTERIES ARE INSERTED PROPERLY AND BATTERY COVER IS IN PLACE.



TO PUT ON BATTERY COVER, FIT CROSSBAR INTO HOLES IN POWER PACK AND SNAP COVER INTO PLACE.

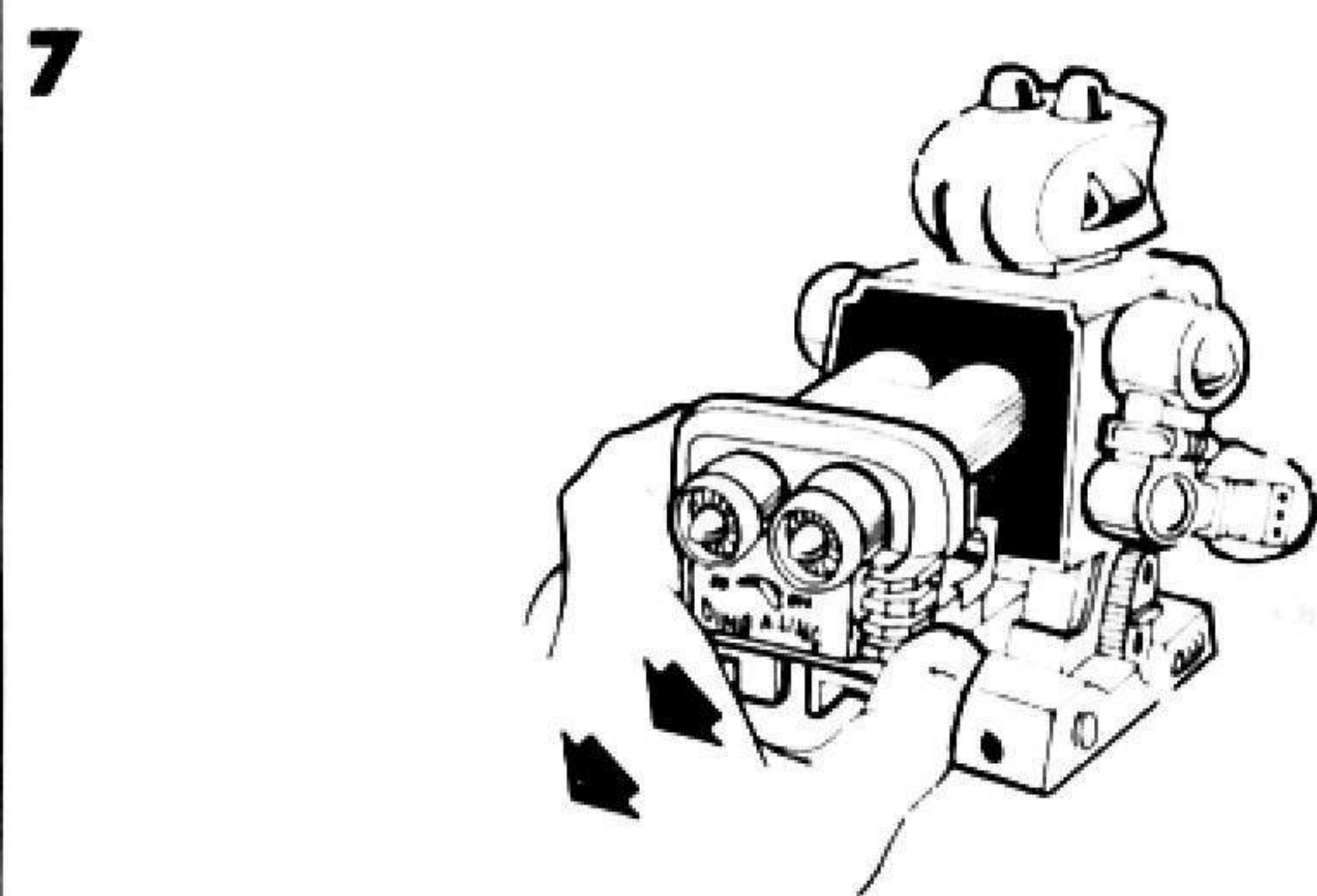


REMOVE BACK FROM DING-A-LING BY PRESSING IN ONE SIDE OF BACK AND LIFTING IT OFF.



HOLD POWER PACK AS SHOWN AND PUT INTO DING-A-LING. PUSH POWER PACK IN UNTIL IT CLICKS INTO PLACE.

CAUTION:
Never turn Power Pack on outside Ding-A-Ling's body — Battery life will be shortened.

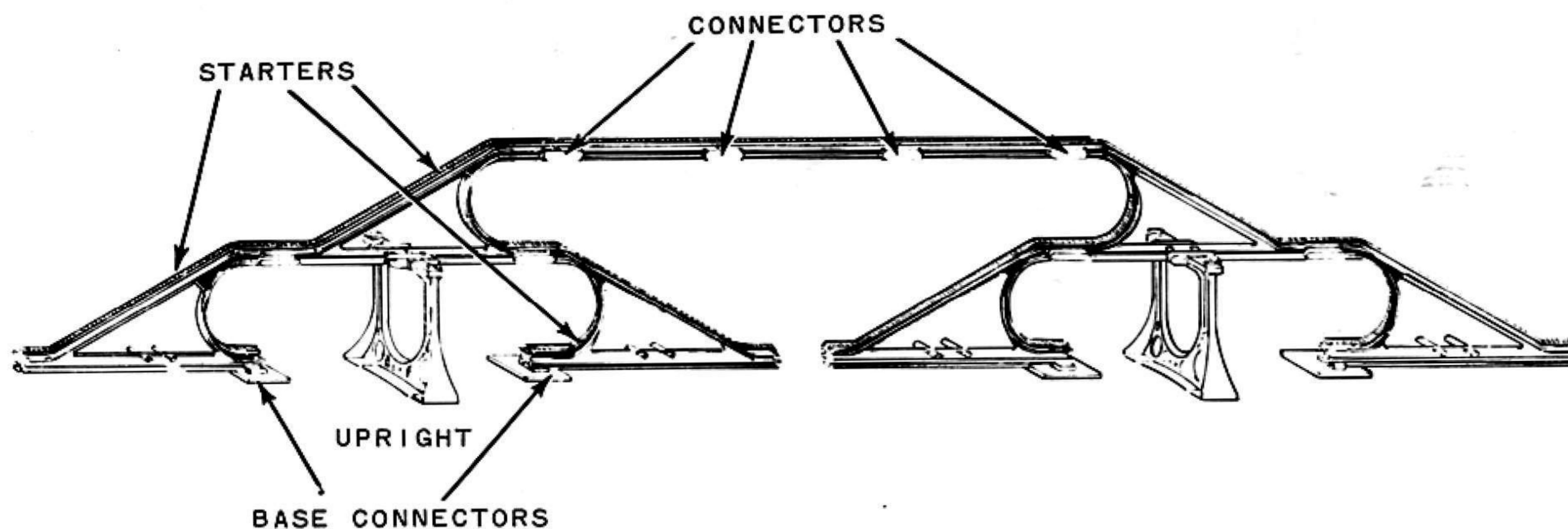


THE POWER PACK WILL FIT ALL DING-A-LINGS (OTHER DING-A-LINGS SOLD SEPARATELY). TO REMOVE POWER PACK, PRESS IN SIDES AS SHOWN AND PULL OUT.

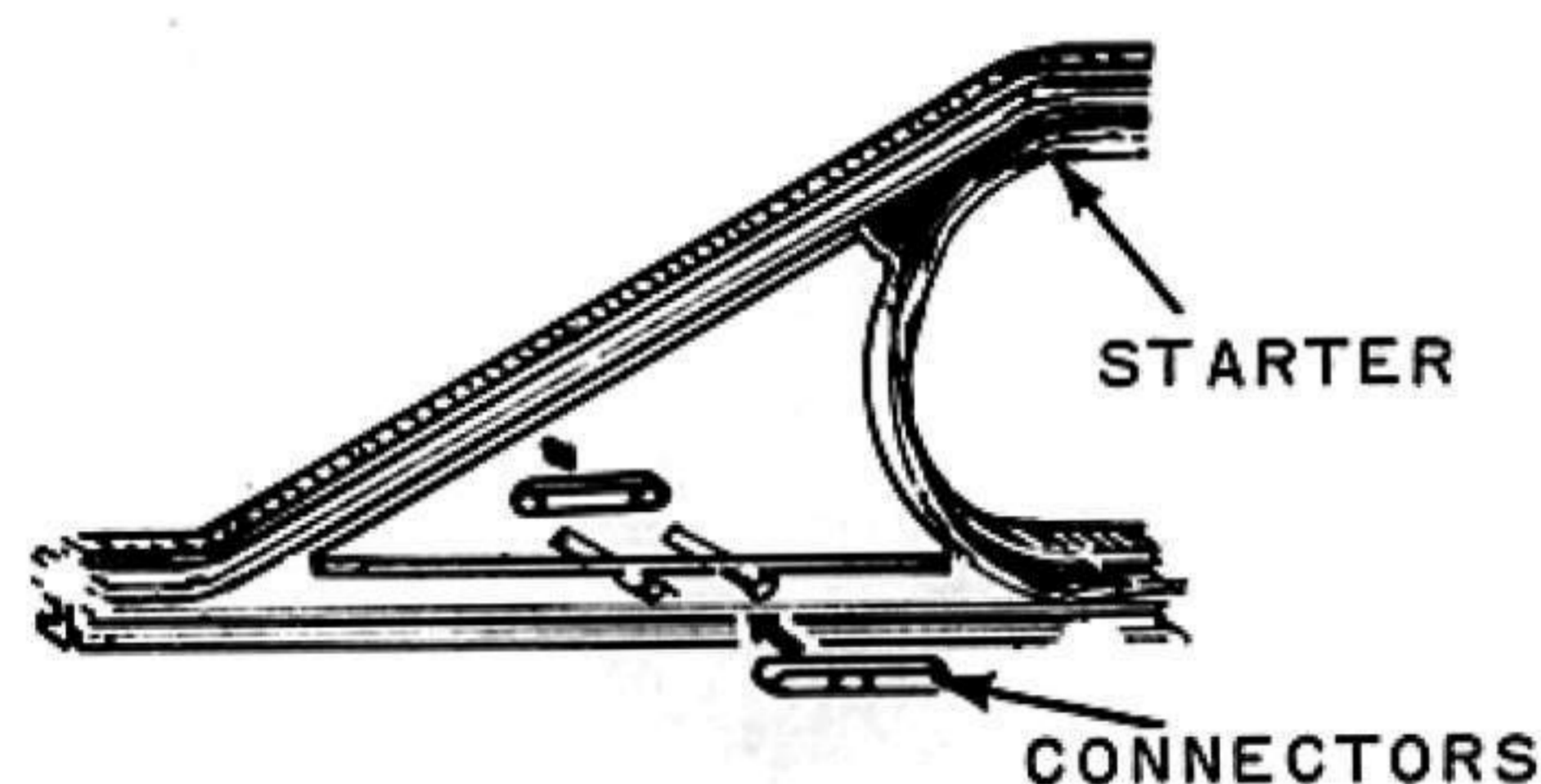
HOW TO CARE FOR POWER PACK

- A. IF POWER PACK DOES NOT WORK, CHECK TO SEE IF BATTERIES HAVE BEEN PUT IN CORRECTLY.
- B. IF POWER PACK STOPS WORKING:
 1. GENTLY LIFT METAL STRIPS INSIDE BATTERY HOLDER TO MAKE BETTER CONTACT WITH BATTERIES.
 2. BE SURE BATTERIES ARE NOT WEAK.
- C. ALWAYS TURN POWER PACK OFF WHEN YOU ARE NOT PLAYING WITH DING-A-LING.

HOW TO ASSEMBLE SET

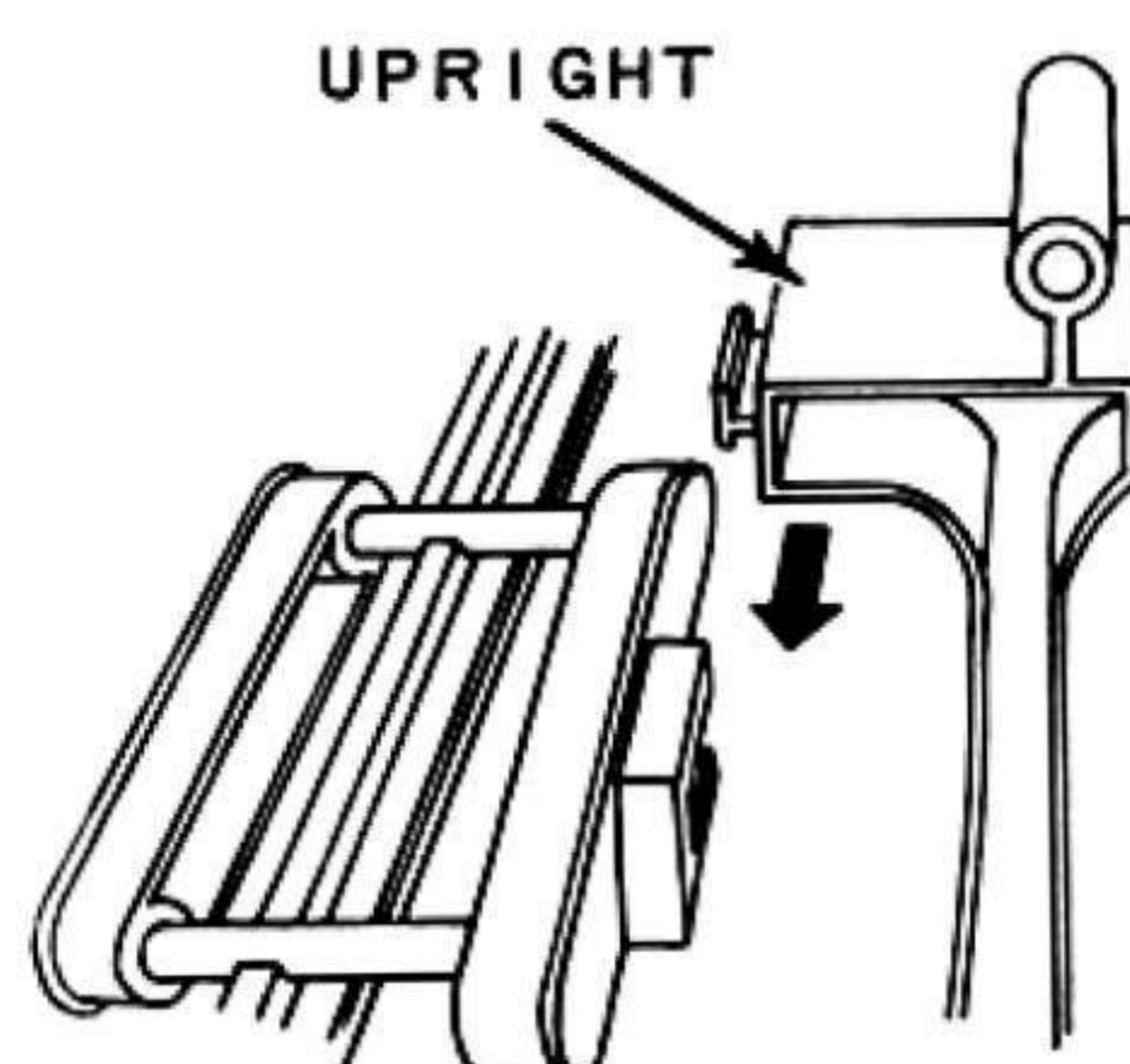


1



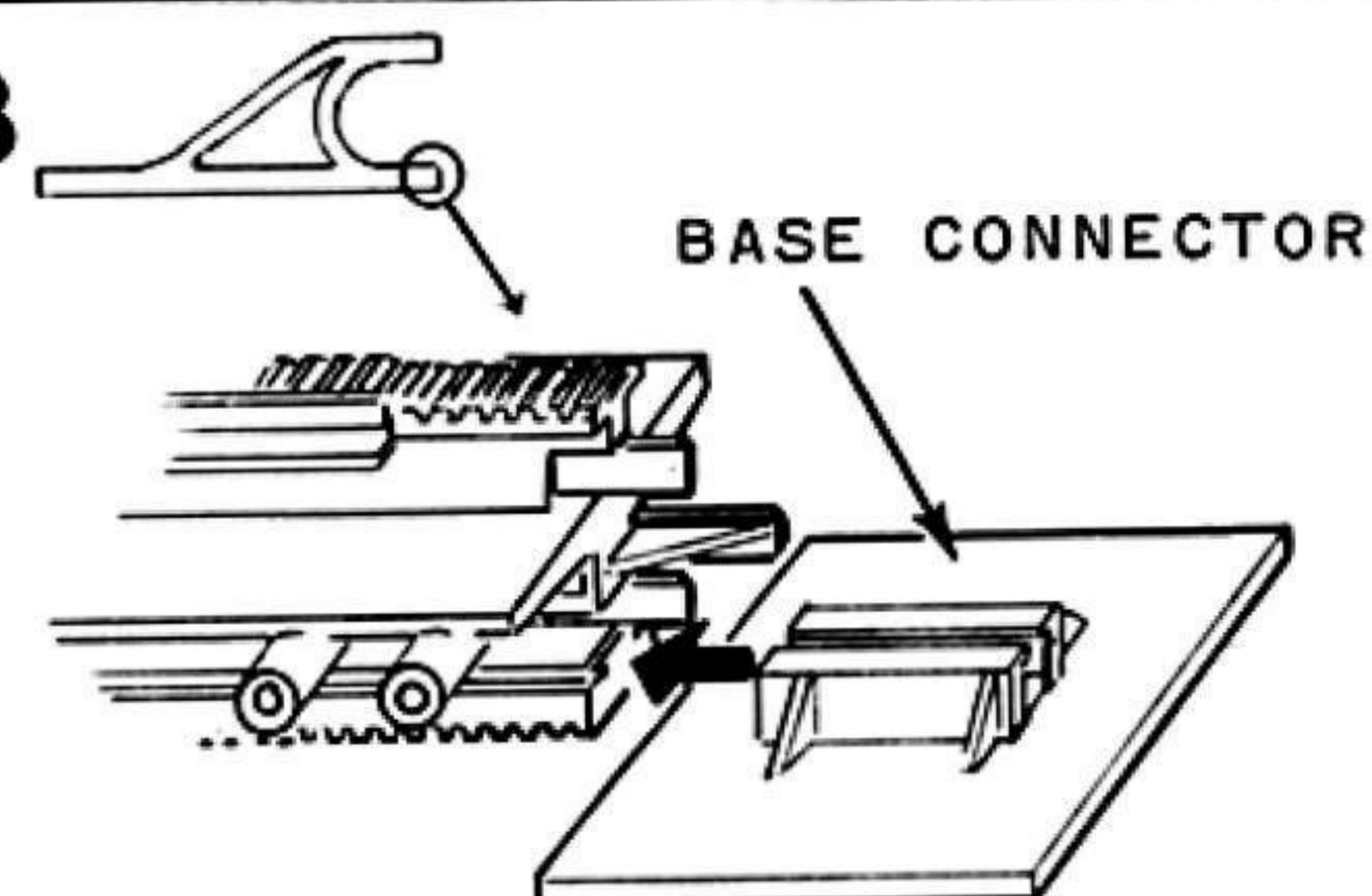
PUT 2 CONNECTORS ON MIDDLE POSTS OF ONE STARTER, AS SHOWN.

2



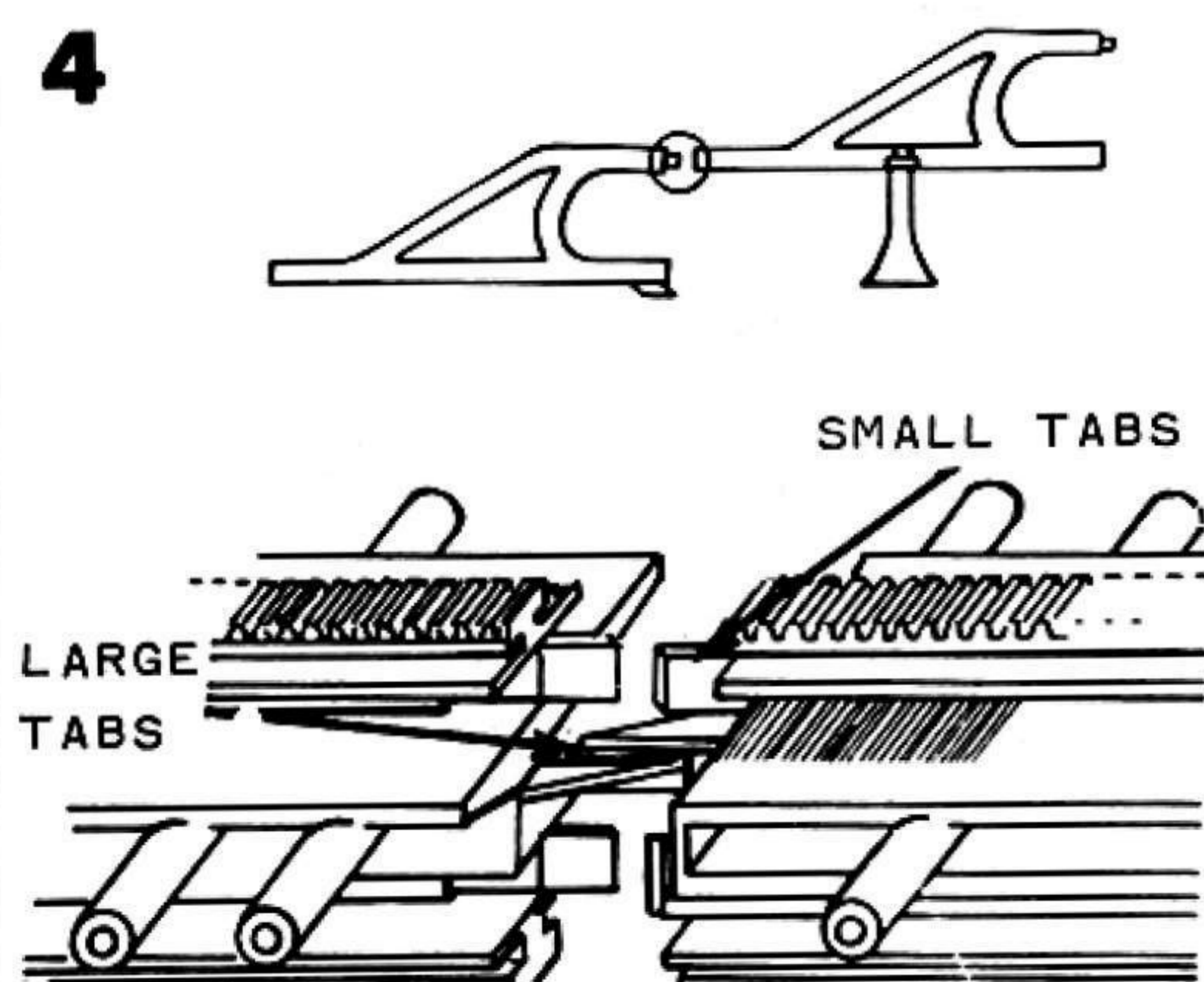
SLIDE BOTH SIDES OF UPRIGHT ONTO TABS OF CONNECTORS, AS SHOWN.

3



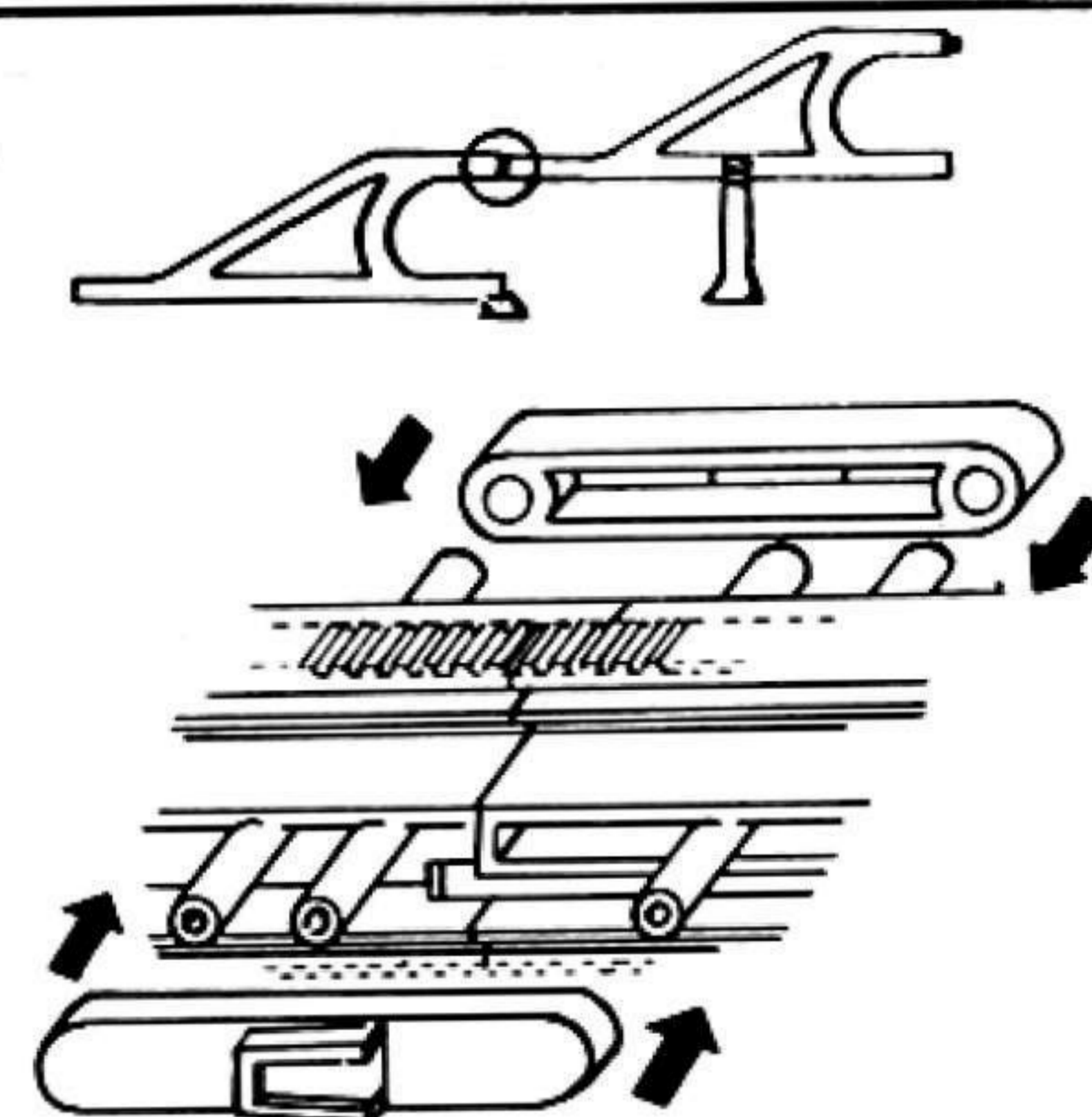
SLIDE 1 BASE CONNECTOR ONTO LOWER GROOVES OF CURVED SIDE OF SECOND STARTER. ASSEMBLE ANOTHER STARTER AND BASE CONNECTOR THE SAME WAY.

4



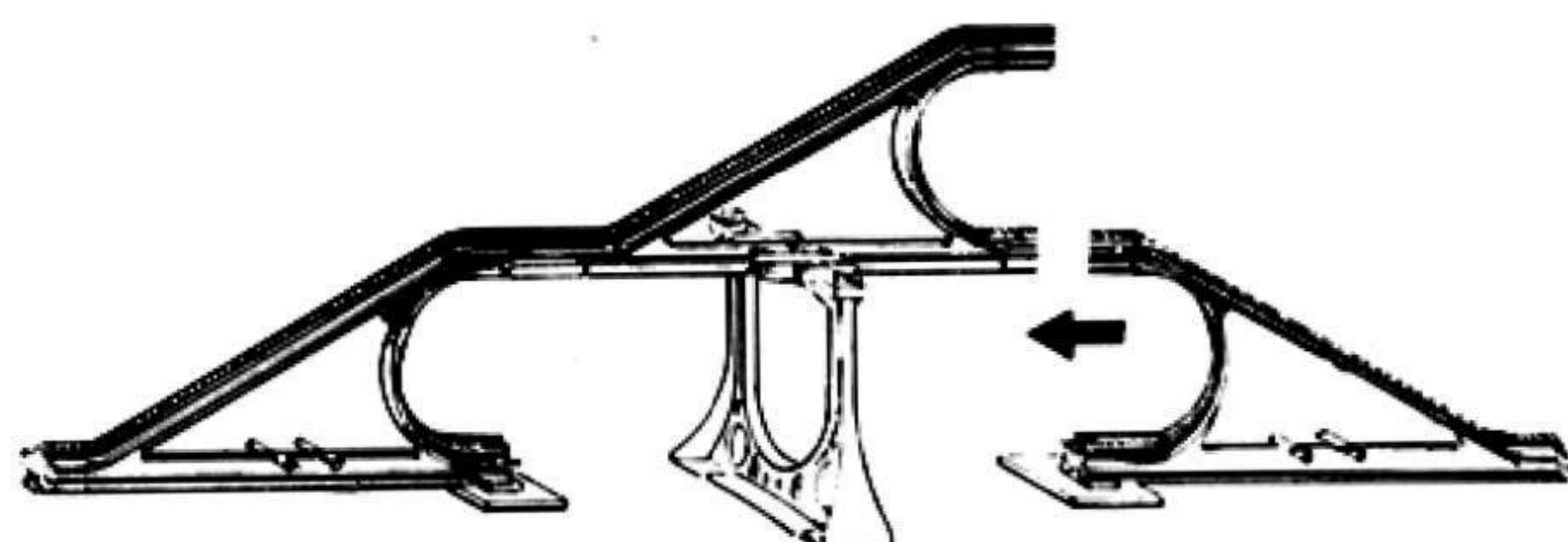
1. HOLD STARTER WITH BASE CONNECTOR IN LEFT HAND.
2. HOLD STARTER WITH UPRIGHT IN RIGHT HAND.
3. PUT FLAT SIDE OF LARGE TABS TOGETHER. PUSH IN UNTIL SMALL TABS TOUCH.
4. TWIST RIGHTHAND STARTER VERY SLIGHTLY TOWARDS YOU AND PUSH TOGETHER.

5



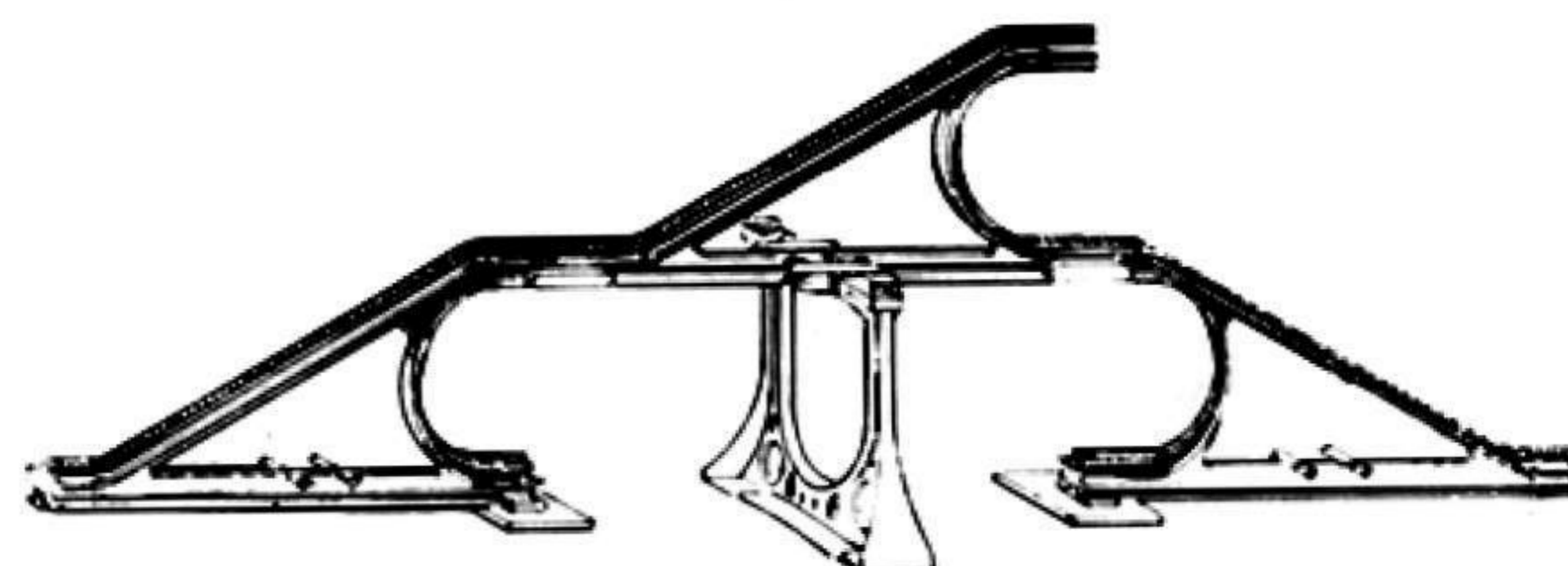
ADD 1 CONNECTOR TO EACH SIDE OF THE STARTERS, AS SHOWN.

6



ATTACH THIRD STARTER, AS SHOWN ABOVE. ADD 2 MORE CONNECTORS.

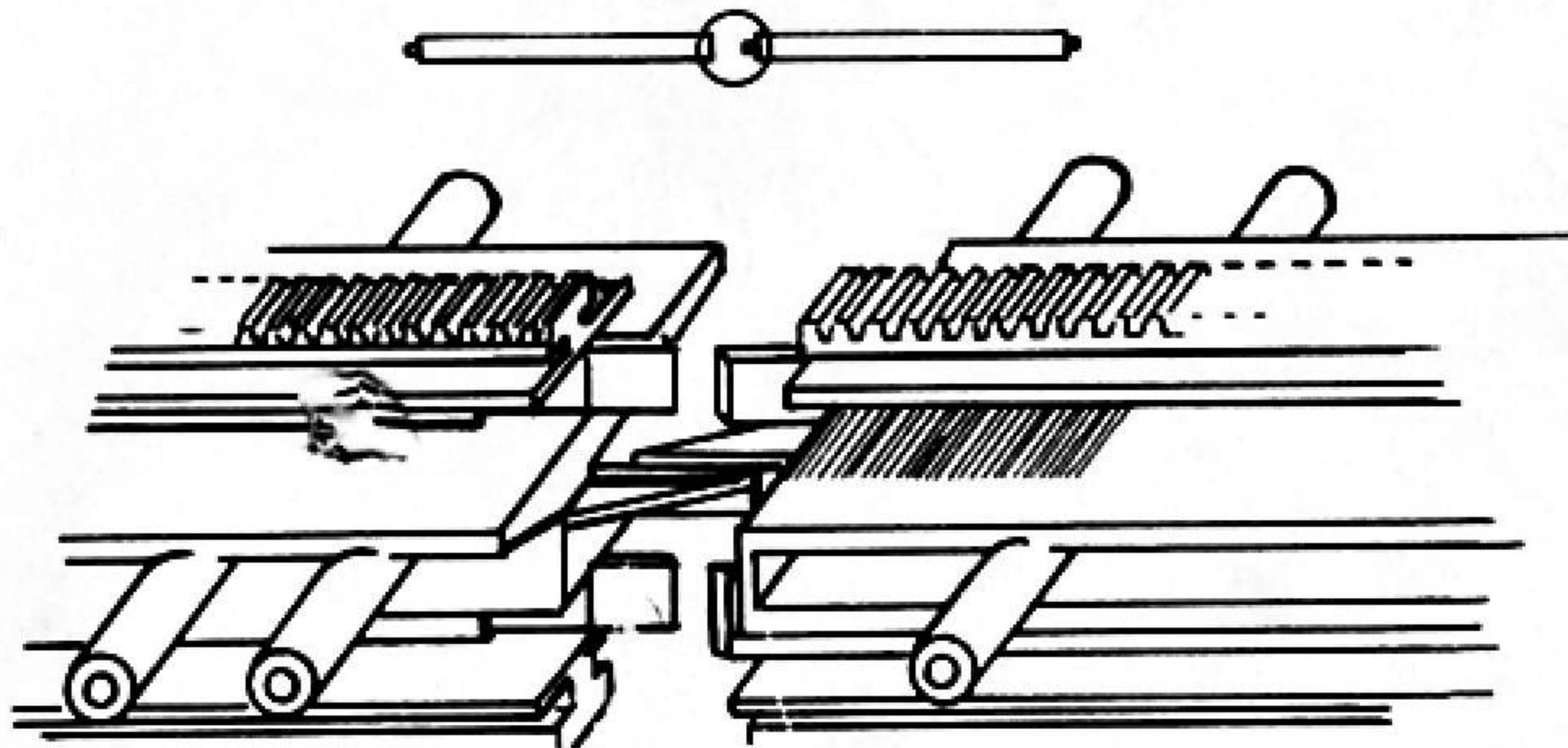
7



YOU HAVE COMPLETED ONE SECTION OF THE SET, AS SHOWN. REPEAT STEPS 1 THROUGH 6 TO MAKE ANOTHER SECTION THE SAME WAY.

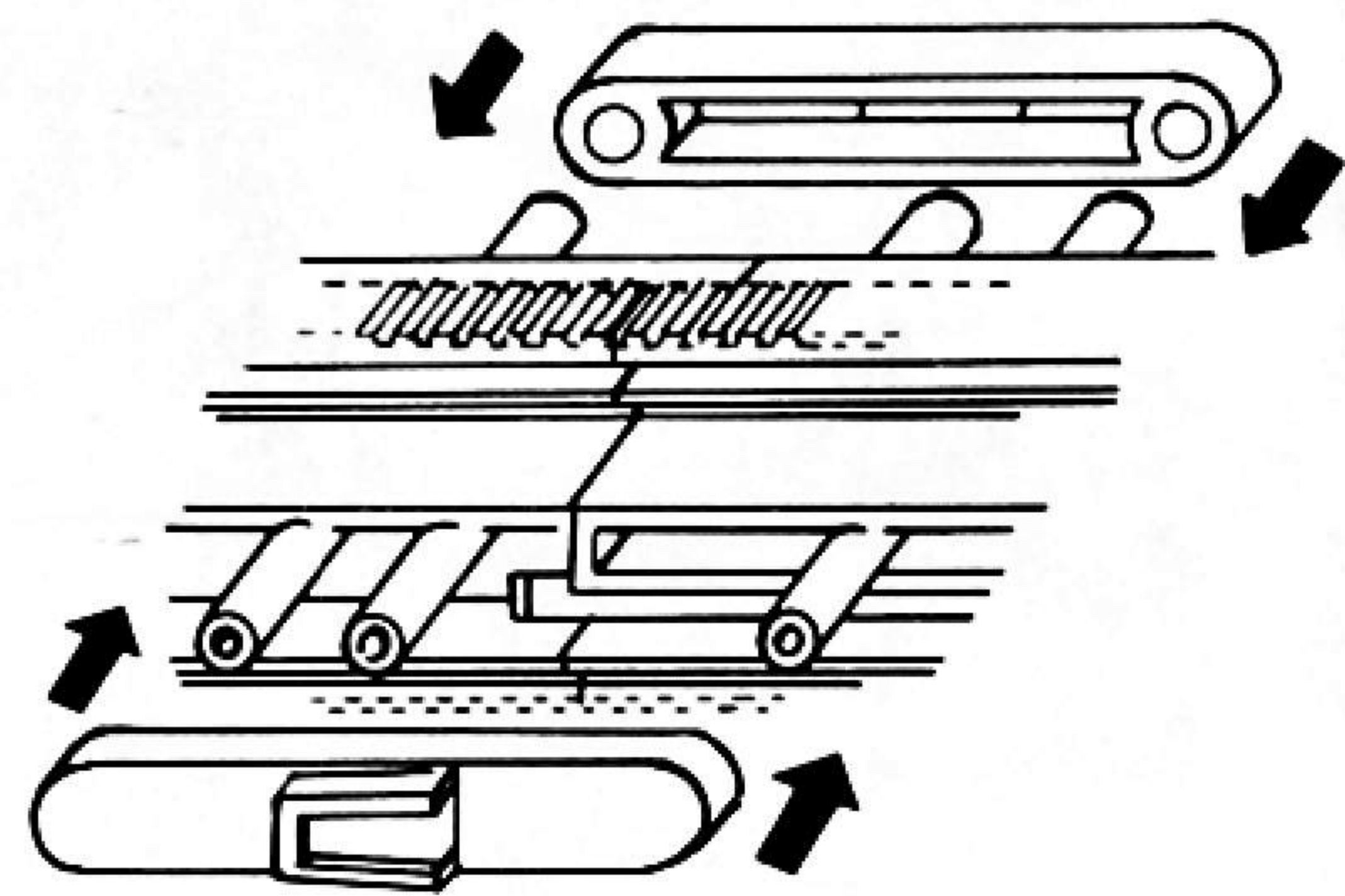
HOW TO ASSEMBLE SET [continued]

8



HOLD ONE SPACE SKYWAY IN EACH HAND. PUT FLAT SIDES OF LARGE TABS TOGETHER. PUSH IN UNTIL SMALL TABS TOUCH. TWIST RIGHT SPACE SKYWAY VERY SLIGHTLY TOWARDS YOU OR AWAY FROM YOU AND PUSH TOGETHER.

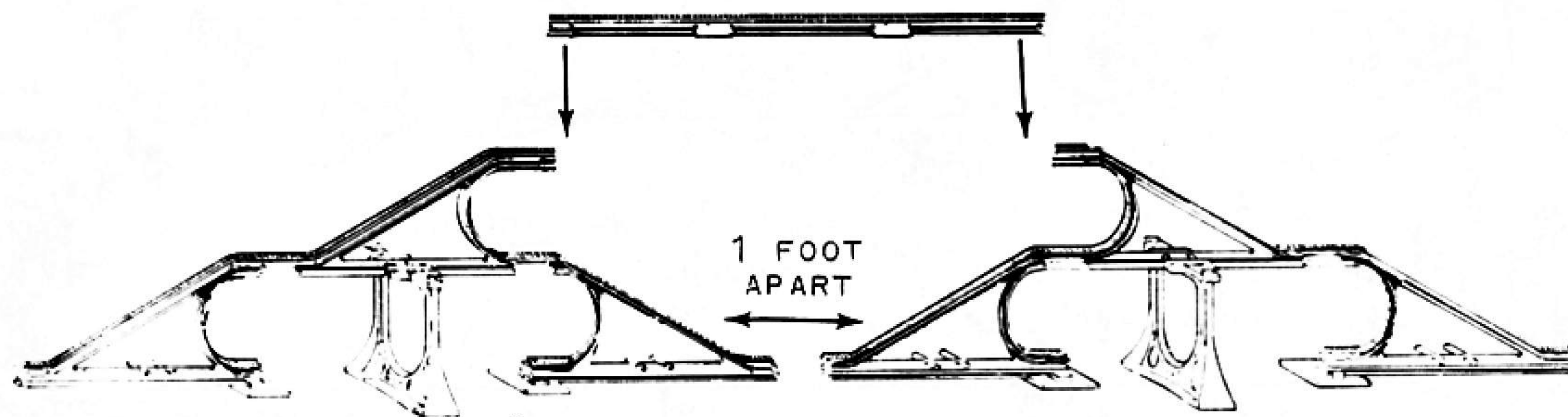
9



ADD ONE CONNECTOR TO EACH SIDE OF THE SPACE SKYWAYS. ADD THE THIRD SPACE SKYWAY AND 2 MORE CONNECTORS THE SAME WAY.

10

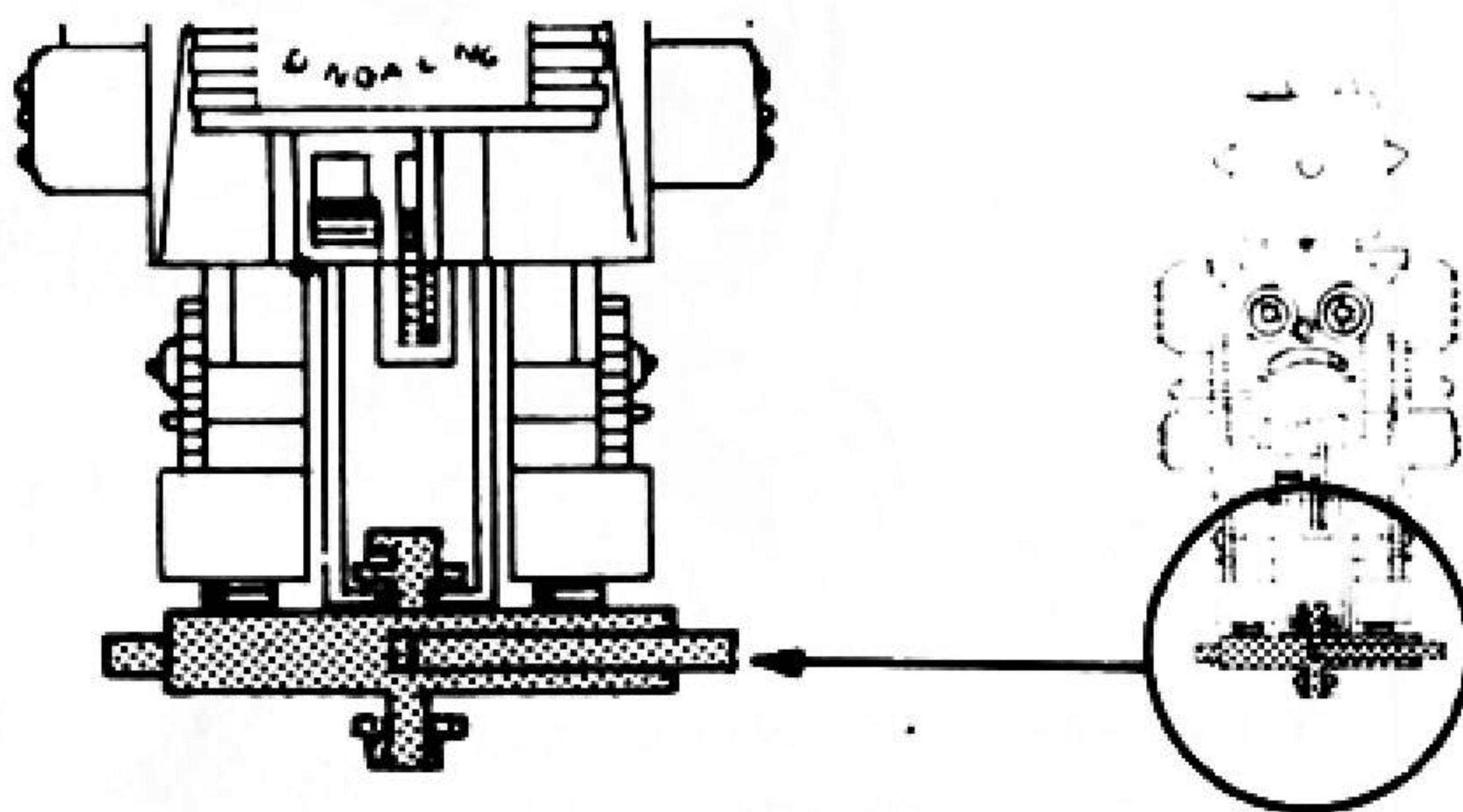
SPACE SKYWAYS



PUT THE COMPLETED SECTIONS ON A FLAT, EVEN SURFACE, ABOUT ONE FOOT APART. CONNECT THE SPACE SKYWAY SECTIONS TO THE STARTERS. ADD 4 CONNECTORS.

HOW TO PLAY

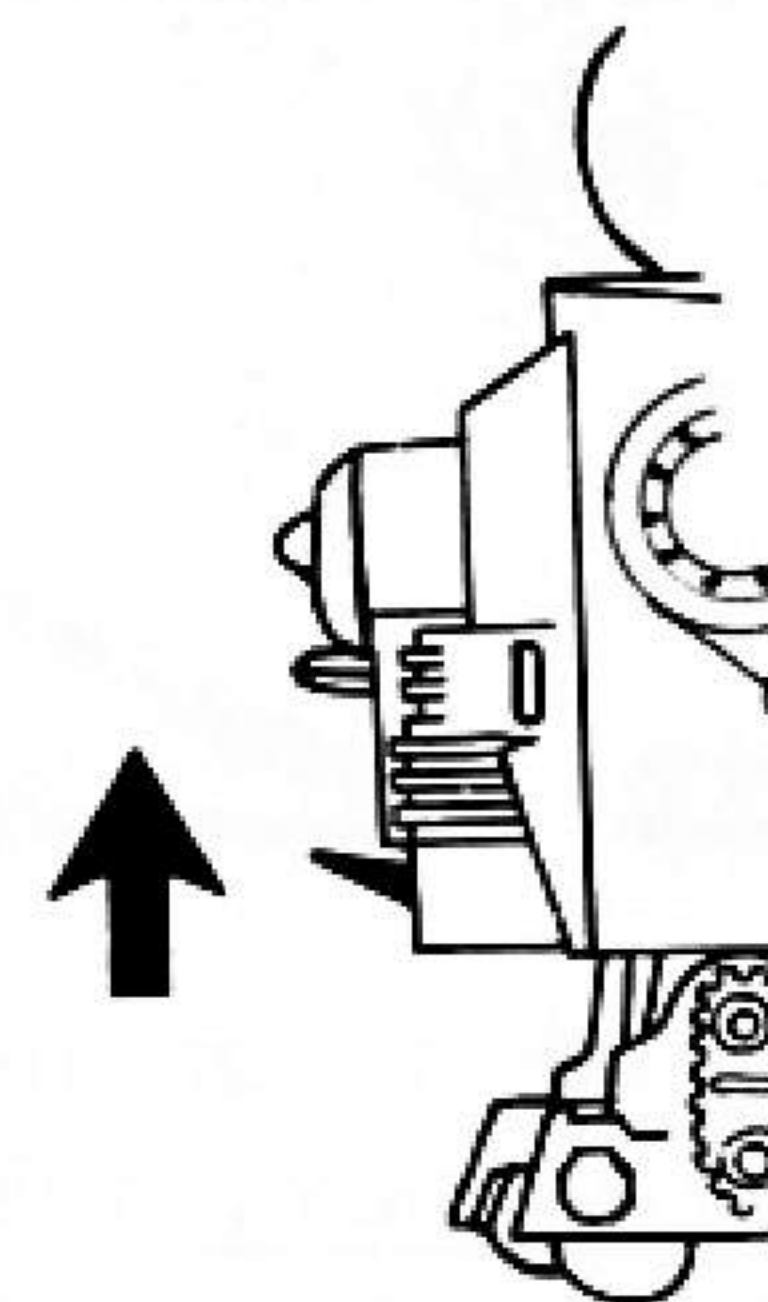
STEP 1



BE SURE SWITCH ON POWER PACK IS IN THE "OFF" POSITION. SLIDE FEET OF DING-A-LING ONTO BEGINNING OF STARTER.

STEP 2

LEVER IN GLIDE POSITION (ALL THE WAY UP)



DING-A-LING MUST ALWAYS GLIDE UP AND DOWN STARTERS

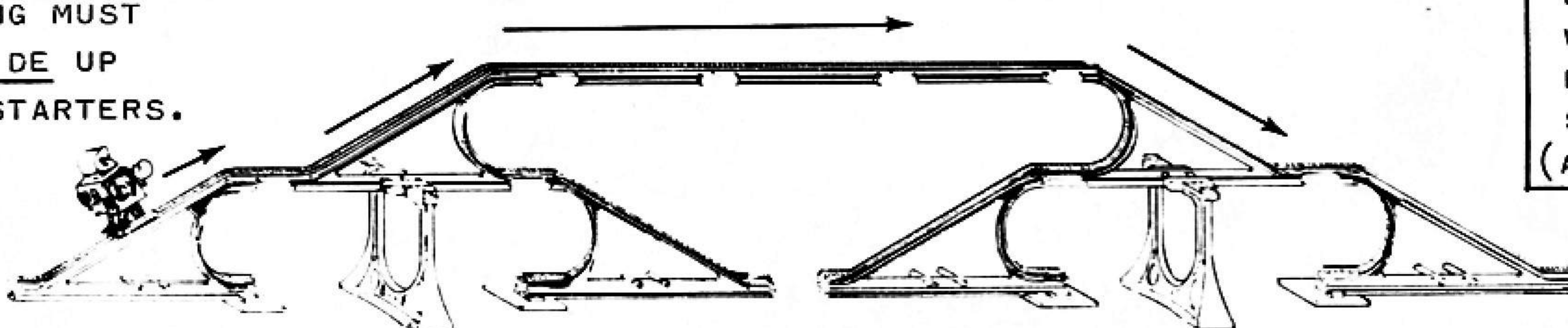
TO MAKE DING-A-LING GLIDE, MOVE SWITCH TO "ON" AND PUSH LEVER ALL THE WAY UP. BE SURE LEVER IS ALL THE WAY UP, AS SHOWN.

STEP 4

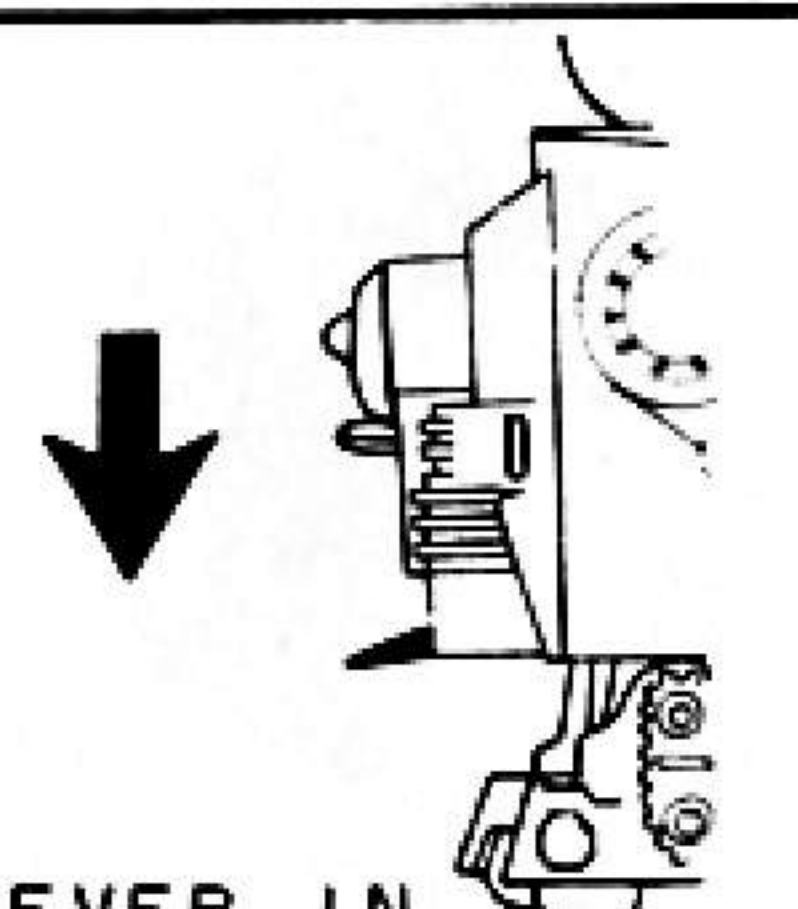
TO MAKE DING-A-LING WALK ON STRAIGHT SPACE SKYWAYS, PUSH LEVER ALL THE WAY DOWN WHILE MOVING DING-A-LING SLIGHTLY FORWARD.

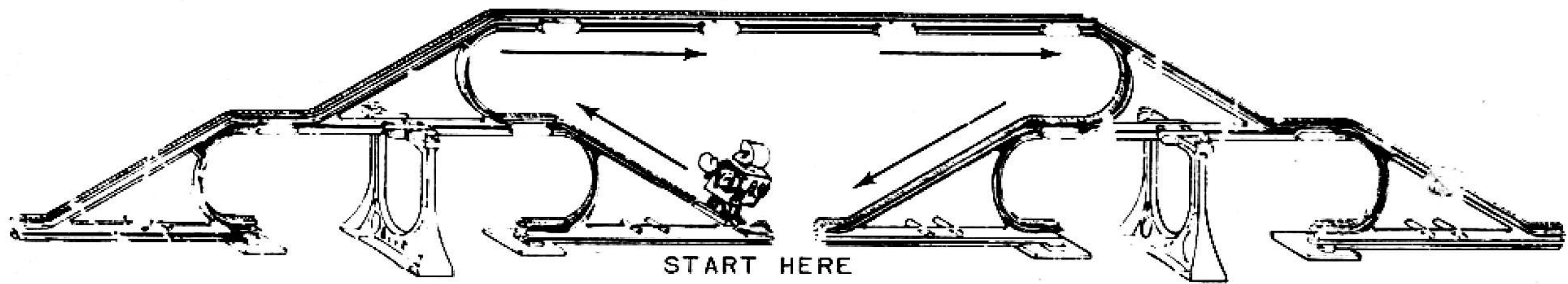
STEP 3

DING-A-LING MUST ALWAYS GLIDE UP AND DOWN STARTERS.

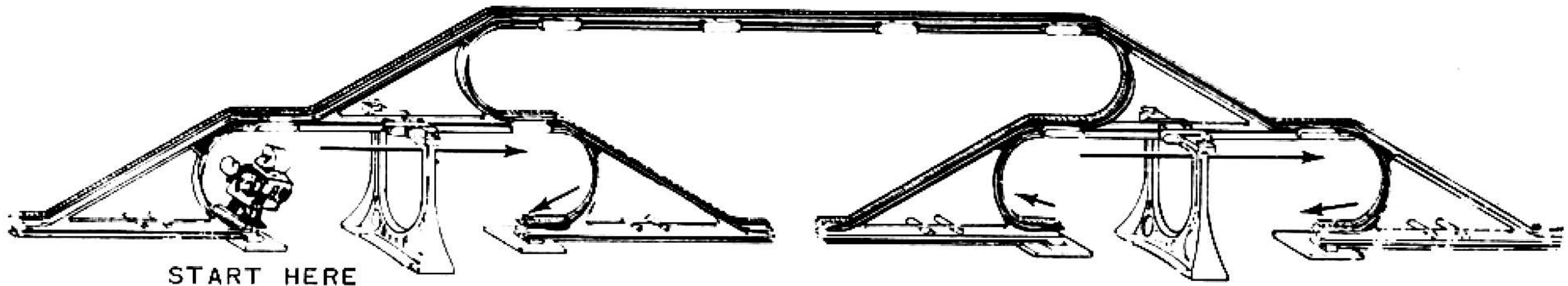


LEVER IN WALK POSITION FOR STRAIGHT SPACE SKYWAYS. (ALL THE WAY DOWN)

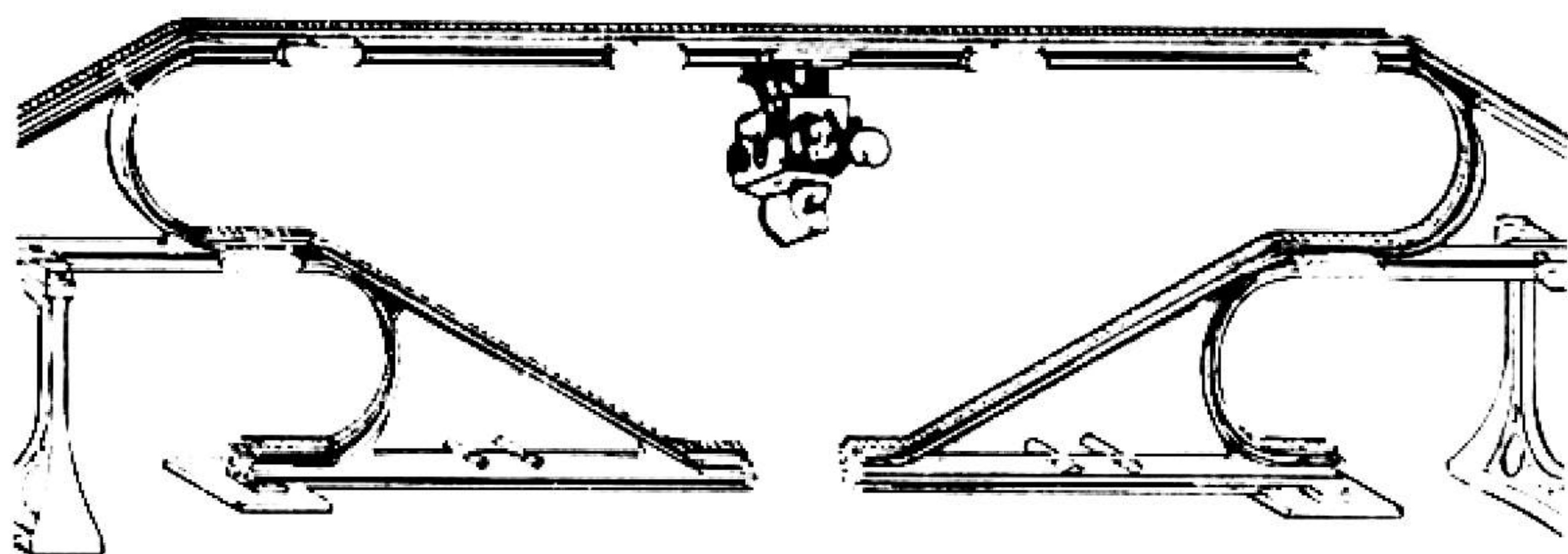




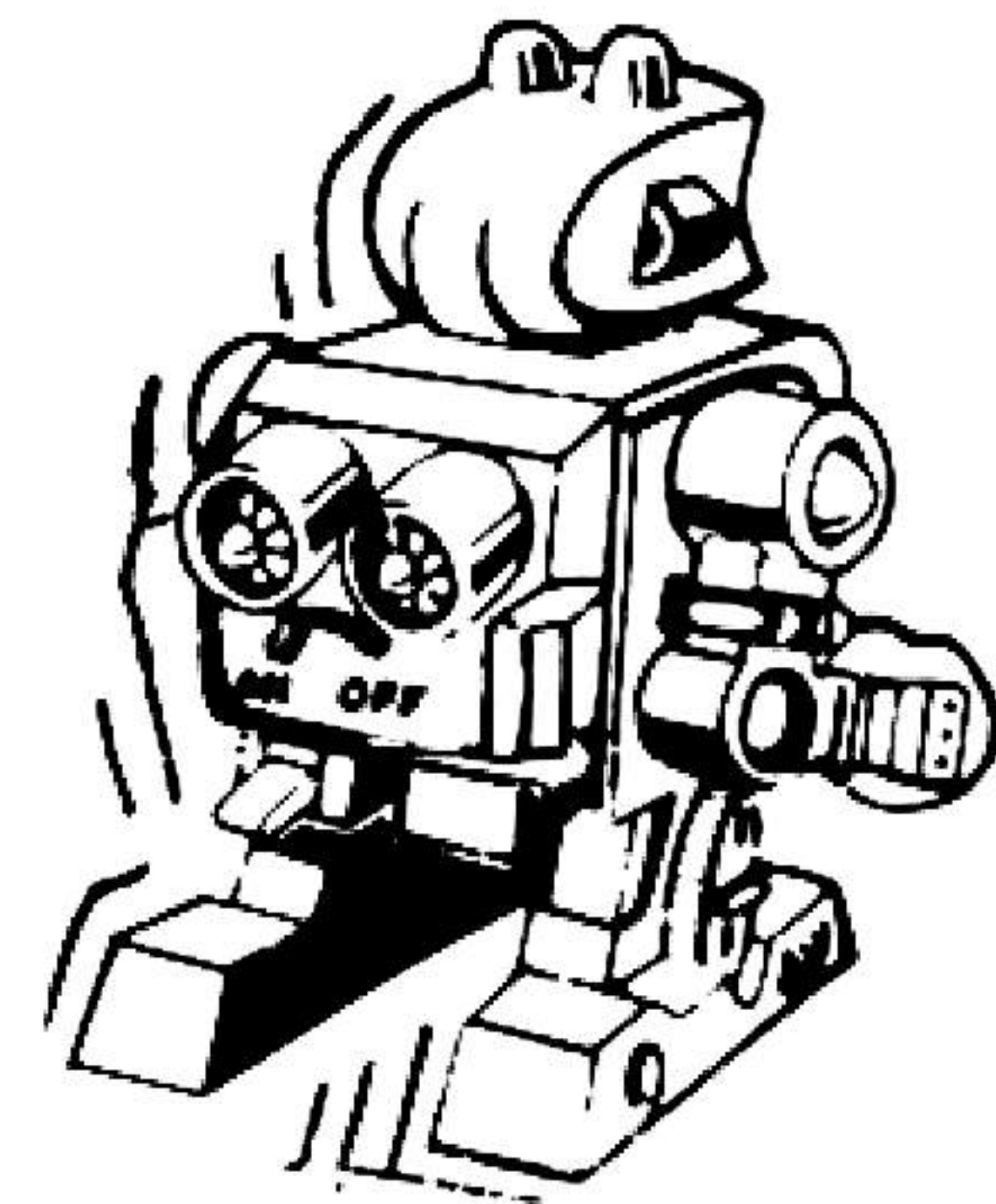
DING-A-LING WILL GLIDE OR WALK ON THE CENTER SECTION OF THE SUPER PYRAMID. PUT DING-A-LING ON STARTER, AS SHOWN. DING-A-LING MUST ALWAYS GLIDE UP AND DOWN STARTERS.



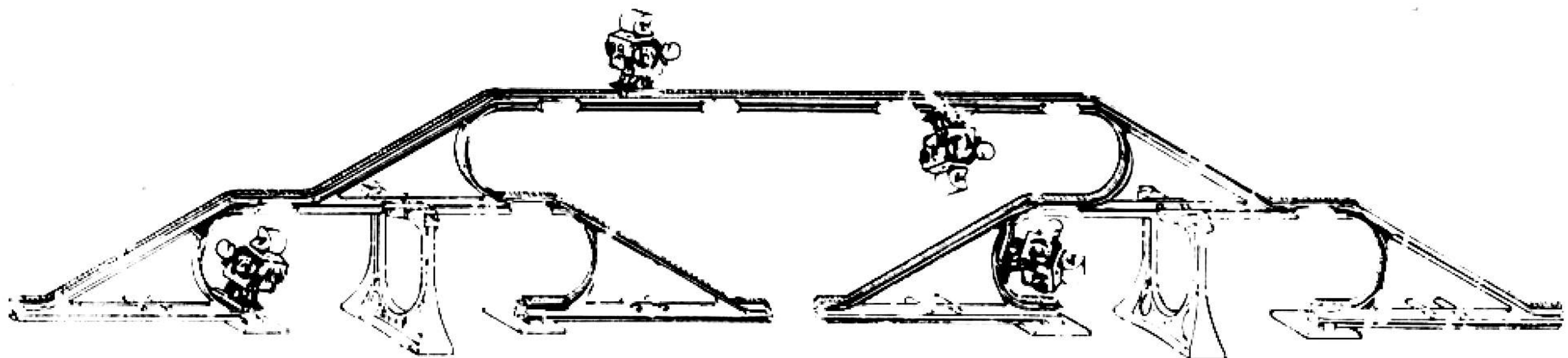
DING-A-LING WILL ALSO GLIDE ON THE SIDE SECTIONS OF THE SUPER PYRAMID, AS SHOWN.



DING-A-LING CAN WALK OR GLIDE UPSIDE DOWN ON STRAIGHT SPACE SKYWAYS ONLY. DING-A-LING MUST ALWAYS GLIDE ONLY UP AND DOWN STARTERS OR AROUND CURVED TRACK.



DING-A-LING WILL ALSO WALK ON A FLAT, SMOOTH SURFACE. LEVER MUST BE IN BOTTOM POSITION.



kids!

YOU CAN PUT MORE THAN ONE DING-A-LING ON THE SUPER PYRAMID. (OTHER DING-A-LING AND POWER PACKS SOLD SEPARATELY).