

[54] **TOY ROBOT**[75] **Inventor:** Hiroshi Horiuchi, Toyko, Japan-[73] **Assignee:** Tomy Kogyo Co., Inc., Tokyo, Japan[**] **Term:** 14 Years[21] **Appl. No.:** 795,829[22] **Filed:** Nov. 7, 1985[30] **Foreign Application Priority Data**

May 17, 1985 [JP] Japan 60-20439

[52] **U.S. Cl.** D21/150[58] **Field of Search** D21/150; 446/290-292,
446/71-75, 49, 100, 376, 487[56] **References Cited****U.S. PATENT DOCUMENTS**

D. 285,599 9/1986 Forino D21/150

D. 290,032 5/1987 Horiuchi D21/150

OTHER PUBLICATIONS

Popular Science, May, 1983, p. 98, top right, Heath's Hero 1, Robot.

Primary Examiner—Melvin B. Feifer
Attorney, Agent, or Firm—Staas & Halsey[57] **CLAIM**

The ornamental design for a toy robot, as shown.

DESCRIPTION

FIG. 1 is a front elevational view of a toy robot showing my new design;

FIG. 2 is a rear elevational view thereof;

FIG. 3 is a right side elevational view thereof;

FIG. 4 is a left side elevational view thereof;

FIG. 5 is a top plan view thereof; and

FIG. 6 is a bottom plan view thereof.

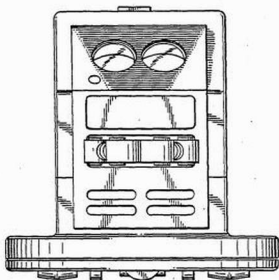


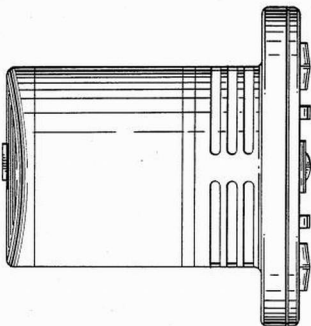
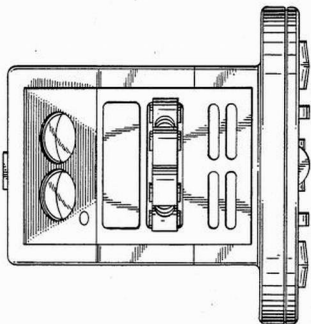
FIG. 2.*FIG. 1.*

FIG. 4.

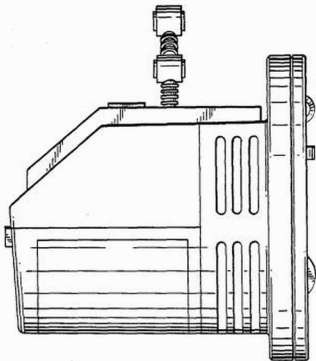


FIG. 5.

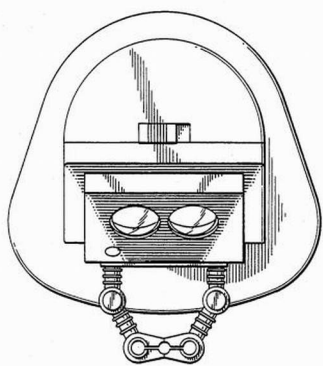


FIG. 6.

